

INSTRUCTIONS FOR THE SAFE USE OF BEAM TROLLEYS

Using beam trolleys safely

Ensure that the trolley is of the correct W.L.L. for the beam that it is required to fit and that there is sufficient adjustment to suit the beam width.

Adjust the trolley to allow approximately 2mm side clearance between the wheel flanges and the beam flange.

Ensure the beam is fitted with suitable end stops.

Only use for loads suspended directly below the trolley and do not side pull.

Always push rather than pull loads suspended on trolleys.

For geared trolleys ensure that the chain is the correct length and that it cannot get caught on any obstacles in the path of travel.

Never travel loads over anyone.

Never exceed the W.L.L. of the trolley

Once installed inspect to ensure free and safe travel along the beam.

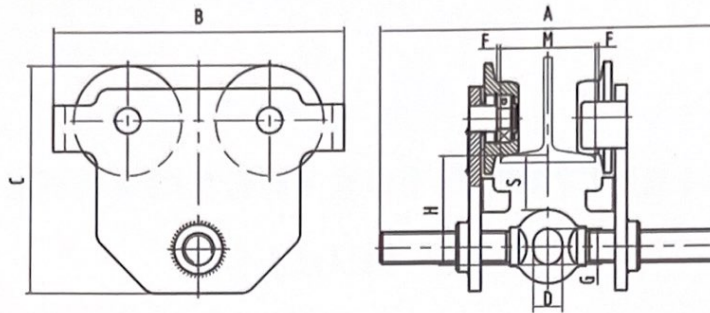
In- service inspection and maintenance

Ensure that the trolley is kept clean and moving parts are lubricated.

Keep the wheels and track surfaces clean and free of contamination.

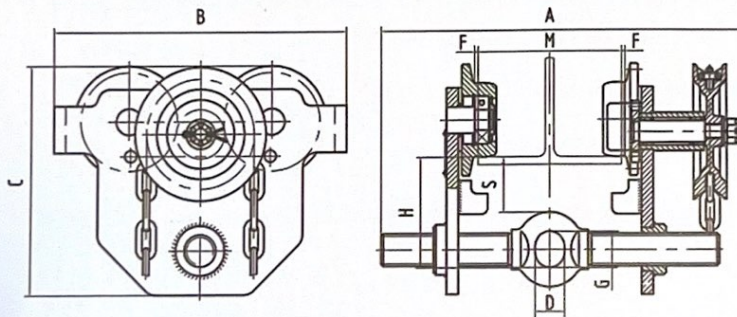
Regularly inspect the trolley for any defects.

BEAM TROLLEYS



PLAIN TROLLEY SPECIFICATIONS

Rated Capacity	ton	0.5	1	2	3	5	
Test load	KN	7.35	14.71	29.42	44.13	61.29	
Min.radius curve	m	0.8	1.0	1.1	1.3	1.4	
Dimensions mm	A	280	302	314	328	346	
	B	199	246	276	332	377	
	C	159	183	211	247	274	
	H	74	90	106	121	136	
	S	40	38	38	40	42	
	D	25	30	40	46	52	
	G	30	36	48	58	65	
	F	1.5~3					
I-beam width range	mm	M	50~220	50~220	66~220	74~220	90~220



GEARED TROLLEY SPECIFICATIONS

Rated Capacity	ton	0.5	1	2	3	5	
Test load	KN	7.35	14.71	29.42	44.13	61.29	
Running height	m	2.5					
Chain pull to lift full load	N	25	50	90	95	140	
Min.radius curve	m	0.8	1.0	1.1	1.3	1.4	
Dimensions mm	A	326	346	357	370	382	
	B	199	246	276	332	377	
	C	159	190	218	264	293	
	H	74	90	106	121	136	
	S	40	44	44	51	43	
	D	25	30	40	46	52	
	G	30	36	48	58	65	
	F	1.5~3					
I-beam width range	mm	M	50~220	50~220	66~220	74~220	90~220